

# The New Zealand Brass Band Championships

July 2027

*To be held in Invercargill, Southland*







# Business Events Southland

## GET IN TOUCH

We're the Business Events Southland team, here to provide free advice to make planning your business activity in our region a breeze. Our team are excited to help you discover our region, connect you with local suppliers, and build a programme of activity for your delegates to treasure and remember.

Waihōpai Invercargill and wider Murihiku Southland and Te Rua-o-te-Moko Fiordland venues are world-class, boasting an abundance of options. Accommodation offerings range from boutique to larger hotels with conference facilities. Our friendly, efficient and experienced team will exceed your expectations. Connectivity is no barrier, with daily direct flights to Waihōpai Invercargill from Auckland, Wellington and Christchurch.

Contact us today!

## THE BUSINESS EVENTS SOUTHLAND TEAM



**Karen Witham** • Conference & Events Manager  
☎ 027 777 8997 ✉ karen@greatsouth.nz



**Janine Daniel** • Business Development Executive  
☎ 027 770 7775 ✉ janine.daniel@greatsouth.nz

**For more information about  
Murihiku Southland visit  
[www.southlandnz.com](http://www.southlandnz.com)**

*Sometimes you need to see it to believe it!*

Murihiku Southland is a dynamic region, with phenomenal sights and attractions. We would love you to register your interest in a famil so you can experience first-hand our diverse offerings. We'll introduce you to amazing operators, work alongside you to take care of your requirements, and ensure you have everything you need to deliver an incredible experience for your delegates.





# Local support

“

Invercargill extends a big, warm southern welcome to our visitors. You join the growing number of people who flock to our beautiful city every year to enjoy our invigorating climate, brave the bivalve at the Bluff Oyster Festival or feel the need for speed at the Burt Munro Challenge.

Our award-winning Queens Park in the heart of town is perfect for a stroll to shake off the dust of a long conference day, or perhaps you can shop 'til you drop in our beautiful modern city centre.

The wider Southland region offers majesty wherever you look. The Southern Scenic Route leads you to the magnificent Catlins and Fiordland and we treasure our connection to the unique Stewart Island.

I hope many of you will get the opportunity to visit our stunning scenery, brilliant facilities and spectacular attractions or simply experience the hospitality of our locals for which we are so famous.

**NOBBY CLARK,**  
INVERCARGILL CITY MAYOR

“

Welcome to Southland. While every mayor in the country will tell you they represent the best part of New Zealand, only one of us can be right ... and I'm the lucky one. You are set to discover Southland truly is a special place.

Our rich landscape transitions naturally from fertile farmland to plentiful rivers to spectacular mountains framing a rugged coastline filled with all sorts of treasures. What we have down here is unique and one of New Zealand's best kept secrets. We are home to the unofficial eighth wonder of the world in Milford Sound and boast two stunning national parks in Fiordland and Stewart Island.

Ultimately, we are defined by our people – famous for our unrivalled hospitality and the only place in New Zealand to have its own regional accent. Southlanders are down-to-earth, hard-working and resilient.

Enjoy your time experiencing the places, the people and the culture that is Southland.

**ROB SCOTT,**  
SOUTHLAND DISTRICT MAYOR

“

Invercargill would be a brilliant host for NZ Brass Band Championship. We boast fantastic facilities and accommodation in addition to considerable experience at running events. Most importantly, everyone will be sure to have a great time, through the southern hospitality that will be shown to them and our magnificent scenery and exciting activities. We are thrilled to have this opportunity to provide this experience for you.

**MARK FROOD,**  
GREAT SOUTH TOURISM &  
EVENTS MANAGER





# Discover dramatic Murihiku Southland - New Zealand's ultimate nature and wildlife destination!

Murihiku Southland is world famous. We're home to some of New Zealand's most spectacular, awe-inspiring and iconic wilderness and rare wildlife. With an abundance of hiking trails, cycling routes, fishing spots, classic motors, Bluff oysters, and cheese rolls, our region has something for everyone!

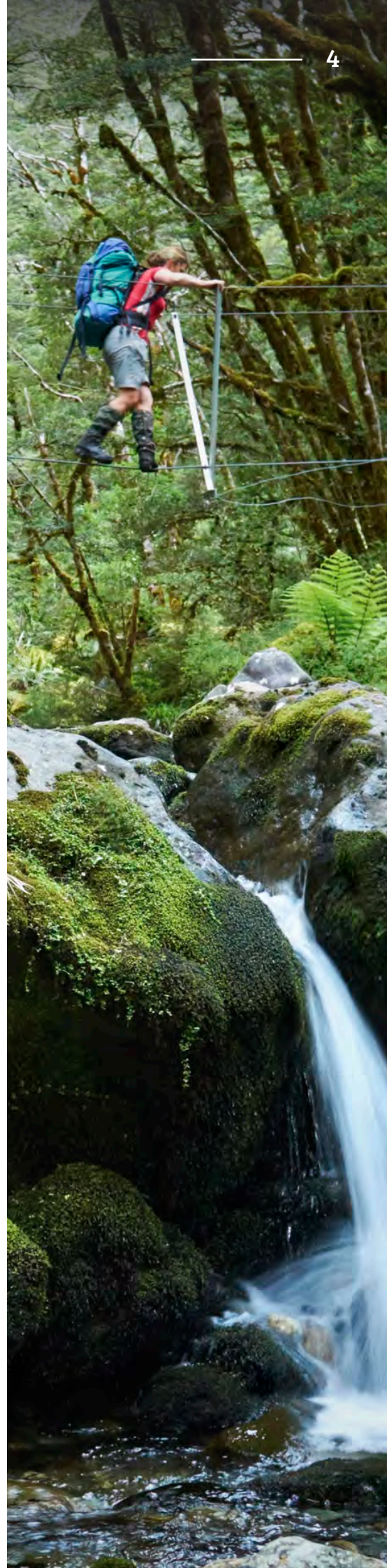
Waihōpai Invercargill is the gateway to explore Murihiku Southland's picture-perfect destinations, and as New Zealand's southernmost city, it seamlessly blends old world charm with modern living. Waihōpai Invercargill has a laid-back atmosphere - except when it comes to celebrating Murihiku Southland's obsession with classic motoring! With a reimagined, rebuilt central city, visiting and doing business in Waihōpai Invercargill is an extraordinary experience. Come south and feel the buzz; it's everything you want and need in a city, without the big city headaches.

On Waihōpai Invercargill's doorstep you'll discover the wild beauty and primeval nature of Rakiura Stewart Island where kiwi wander freely, and blue cod caught on the glistening water is transformed into a mouth-watering, gourmet treat. It is possible to visit Rakiura Stewart Island for just the day by ferry or helicopter from Motupōhue Bluff or a flight from Waihōpai Invercargill, but it's always recommended to stay a day or three at least!

Marvel at the wonder that is Te Rua-o-te-Moko Fiordland as awe-inspiring sights rise-up around you, then kick back with some fine-dining Te Anau style. Visitors from all over the world come to Te Rua-o-te-Moko Fiordland to see the wonders of Piopiotahi Milford Sound and Patea Doubtful Sound or to hike one of the area's Great Walks. Stay a while and base yourself in the picturesque township of Te Anau to experience the area fully.

Southlanders are surrounded and sustained by lush farmland, rich waters, bountiful coastlines and abundant nature. We care deeply about the treasures in our backyard, and the Maori spirit of kaitiaki guardianship over them is something that anchors and unites us all.

We're a welcoming, generous lot. Down to earth, unapologetically proud, and focused on an exciting future. We could go on, but the long and short of it is the door's always open, the kettle's on, and we can't wait to show you around.





# Waihōpai Invercargill

## Waihōpai Invercargill is the regional capital and commercial hub of Murihiku Southland.

Founded in the 1850s, Waihōpai Invercargill is New Zealand's southernmost city - and one of the southernmost cities in the world. Numerous heritage buildings and statues scattered around the city give Waihōpai Invercargill that old-world charm. Wide streets in a gridded layout make it easy to find your way around the city, driving or walking, and the flat layout makes it great for cycling too.

There are several nature reserves and parks to check out for a picturesque walk or ride. Queens Park is an award-winning park and one of the country's most gorgeous national gardens. The park is a sprawling 80 hectares of wildlife habitats, beautifully kept gardens, playgrounds, and sports areas. Anything related to connecting to nature and getting your body moving can be found at Queens Park. Grab a picnic basket and go eat and play with the whole family at the park.

Fondly dubbed the "City of Water and Light", referring to the long summer daylight hours, frequent appearances of the Aurora Australis (Southern Lights), and the city's position beside the Waihōpai River estuary, Waihōpai Invercargill has plenty of character and a friendly, laid-back atmosphere - except when it comes to celebrating Murihiku Southland's obsession with classic motoring!

It all started with local legend, Burt Munro, setting a land speed record in 1967 on his Indian Scout Motorbike. Now recognised as New Zealand's "Classic Motoring Capital", the city boasts an impressive vintage truck collection, a world-class motorcycle display and more!

The city centre may be small, but it has everything you need if you're a foodie. Multiple types of cuisines are available from the diverse number of restaurants and lively cafes that all have their special touch. Want to try some succulent seafood and iconic Bluff oysters, try some Southland prime beef or lamb, or maybe try a swede, or perhaps you've heard all about this 'Southland Sushi' the

Southland cheese roll? You can taste it all in Waihōpai Invercargill.

People in the city are hard-core coffee lovers. With numerous cafes to choose from with each their special unique quality. Some even roast their own beans and provide their beans across the region.

Looking for something to do for the whole family? Try go-karting, tenpin bowling, paintball, or horse trekking! Go have a swim at Splash Palace and try the country's southernmost hydroslide or head over to Oreti Beach! Go for a matinee at the cinema, try indoor climbing at Clip 'N Climb or work off the sweets and cheese rolls and go for a jump and tumble at Jump n Fun. No matter the weather, there is always something to do.

Waihōpai Invercargill truly is the gateway to Murihiku Southland with its airport located only 10 minutes from the city centre, making it a perfect place to start your adventure into the wider region.



# Making your way here

## Murihiku Southland is more accessible than ever!

Murihiku Southland encompasses the southernmost area of New Zealand, including Rakiura Stewart Island. This mighty region stretches from the wilderness of Te Rua-o-te-Moko Fiordland in the west to the rugged Catlins in the east, with the heart of the region, Waihōpai Invercargill, nestled on the southern coast.

Waihōpai Invercargill is a very reachable destination with direct flights from Auckland, Wellington and Christchurch. The short 5km drive from the centre of the city to Invercargill Airport takes just under seven minutes. Both Te Anau and Māruawai Gore are within easy driving distance from the city, with the road to Te Anau taking you through some spectacular scenery.

Waihōpai Invercargill is just a few hours drive from both Queenstown and Dunedin International Airports, with these journeys taking you through some of New Zealand's most stunning landscapes. Queenstown and Dunedin are great pre and post event destinations.

## Flying

### DIRECT FLIGHTS TO INVERCARGILL

Auckland - 2h  
5 days a week, 1 flight per day

Wellington - 2h 10m  
7 days a week, 2-3 flights per day

Christchurch - 1h 25m  
7 days a week, 6-7 flights per day

## Driving

### DRIVE TIMES TO INVERCARGILL

From Queenstown Airport - 180km  
Approx. 2h 15m

From Dunedin Airport - 183km  
Approx. 2h 20m

From Christchurch - 566km  
Approx. 7h



# Getting around town

**Waihōpai Invercargill has a range of transport services on offer.**

Wherever you'd like to go, there's a way to get you there in comfort and style. From getting around the city to venturing further out into the region.

## Be driven

### TAXI SERVICES

Blue Star Taxis - 03 217 7777  
 Invercargill Taxi - 03 216 5995  
 EziCab - 027 217 6767  
 Te Anau Taxi Transfers - 020 483 2628  
 MT Taxi Gore - 03 208 12443

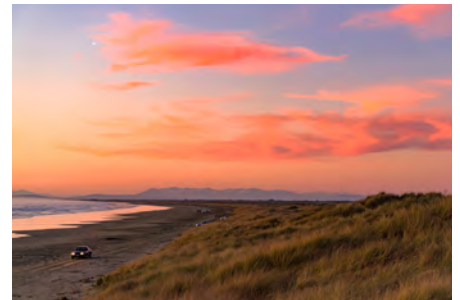
### CHARTER COACHES

Go Bus - 03 218 7108  
 Event Bus - 0800 66 77 44  
 Executive Car Services - 03 216 3434

## Self drive

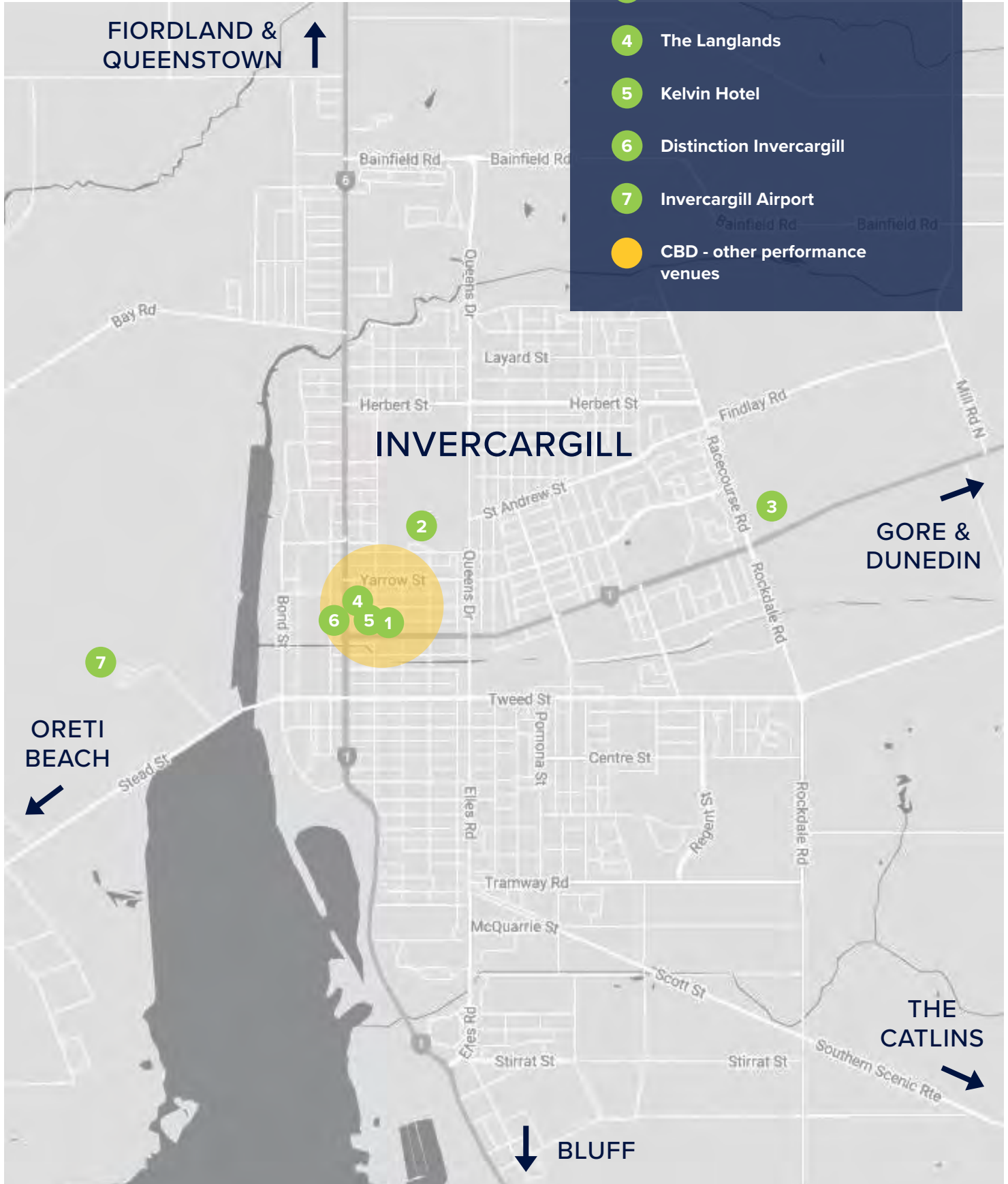
### RENTAL CARS

Avis Car Rental - 03 218 7019  
 Jucy Rentals - 0800 399 736  
 Budget Car Rental - 03 218 7012  
 Thrifty Car Rental - 03 218 6100  
 Apex Car Rentals - 03 928 5205  
 RaD Car Hire - 03 214 4820  
 Hertz Car Rental - 03 218 2837  
 Europcar - 03 486 2358  
 GO Rentals - 09 974 1598





# Key locations





# Dining in central Invercargill





# A and B Grade Band Competitions

## Civic Theatre

88 Tay Street

**Built in the early 1900s, the Civic Theatre is an exceptional example of Edwardian architecture and offers an unparalleled experience right in the heart of the city.**

The Civic Theatre can cater for events with up to 1000 guests, from smaller business meetings to larger conferences. Choose your desired space from a selection of well-equipped rooms and configurations. Ranging from the opulent theatre stage with the ornate auditorium, to the cosy piano lounge with its plush, deep-buttoned armchairs – there is a room to suit the atmosphere of any occasion.

If you are planning a seated meeting, workshop or small conference for up to 30 participants, the drawing room is your ideal option. Equipped with a large TV screen, sound system, video calling capabilities, Wi-Fi, a water station and heritage-style comfortable furniture, this little gem of a room provides the perfect set up.

For an sophisticated, elegant event with a taste of Invercargill's heritage, look no further than the Civic Theatre.

### CONTACT DETAILS

**Jason Wade**

021 322 104

jason.wade@icc.govt.nz

www.icc.govt.nz/civic-theatre



### CAPACITY



### SAMPLE MENU

The Civic Theatre partners with premier southern suppliers to showcase local fare. Whether it's morning tea, lunch, afternoon tea or dinner, they can create meals matches the spectacle of dining in a truly unique space.

### HIGHLIGHTS

- Category 1 NZ Historic Places Trust classified building
- Stunning heritage-rich rooms that combine charm with functionality
- Complementary presentation resources in all rooms
- Free Wi-Fi
- Conveniently located in the heart of the city

### SUSTAINABILITY

The Civic Theatre is replacing old technology to energy efficient alternatives, provides water stations encouraging clients to use reusable water bottles, and offers broadcast quality streaming as an option to reduce long distance travel for the carbon conscious.









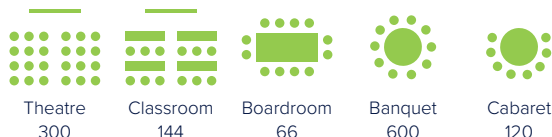
## Invitational Slow Melody

# Bill Richardson Transport World

491 Tay Street

The largest private automotive museum of its type in the world, Bill Richardson Transport World is home to a variety of versatile conference and meeting spaces. Brimming with natural light and equipped with state-of-the-art technology, the purpose-built conference and meeting spaces on-site are flexible and can be arranged according to your needs. All events held at the venue are overseen by the team at Transport World, who offer extensive expertise.

### CAPACITY



### HIGHLIGHTS

- In-built, modern AV amenities
- Versatile meeting spaces
- Housed within a world-renowned vintage vehicle museum

### CONTACT DETAILS

**Hannah Whyte**

📞 027 555 4520

✉️ hannah.whyte@transportworld.nz

🌐 www.transportworld.nz



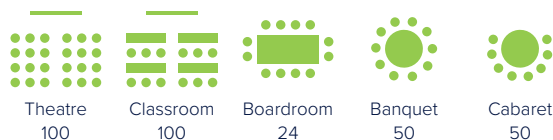
## Ensemble Events & Elite Solos

# Te Rau o Te Huia

113 Esk Street

Te Rau o Te Huia is a unique facility that incorporates new infrastructure and a 150 year old church. It opened in 2021 and houses the Southern Institute of Technology's creative courses. It's an amalgamated space comprising of a revitalised church building, a new 3-storey building, an atrium joining the two buildings and a cafe extension. Both of the larger event areas (church and modern atrium) have state of the art audio and visual resources. There are also smaller rooms available, ideal for meetings or conference break-out spaces.

### CAPACITY



### HIGHLIGHTS

- Stunning mix of historic and modern architecture, with a heritage church incorporated into a new building
- Variety of unique meeting spaces including sound room.
- On-site cafe which can provide catering for events

### CONTACT DETAILS

**Hamish Small**

📞 03 211 2641

✉️ hamish.small@sit.ac.nz

🌐 www.sit.ac.nz/campus/Invercargill



## C and D Grade Band Competition

# SIT Centrestage Invercargill

33 Don Street

The Centrestage Theatre is located in the heart of the inner City of Invercargill, surrounded by cafes and retail shops. Centrestage has a good sized foyer with a bar and ticketing office, two levels of dressing rooms and a green room. The complex is suitable for a range of activities including productions, ballet, drama, concerts, public meetings/events, movies, conferences and corporate events.

### CAPACITY



Theatre  
309

### HIGHLIGHTS

- Inner City Location

### CONTACT DETAILS

**Managed by: Southland Chamber of Commerce**

**Contact: Lynn Tong**

☎ (03) 218 7188

✉ [lynn@southlandchamber.co.nz](mailto:lynn@southlandchamber.co.nz)

🌐 [www.centrestage.ac.nz](http://www.centrestage.ac.nz)



## Solo Competitor Event Venue

# Repertory House

167 Esk Street

Invercargill Repertory Society Inc. or just Rep which it is fondly known as, has been an Invercargill institution for over 80 years. Since 1936 Rep's mission has been to Promote, Provide and Foster Performing Arts in the community. Each year Rep produces amateur theatrical productions in our very own purpose-build 140 seat theatre which is also available to hire outside our performance schedule.

### CAPACITY



Theatre  
140

### HIGHLIGHTS

- Inner City Location

### CONTACT DETAILS

☎ (03) 218 6257

✉ [repertory.invercargill@gmail.com](mailto:repertory.invercargill@gmail.com)

🌐 [www.invercargillrepertory.co.nz](http://www.invercargillrepertory.co.nz)





## Solo Competitor Event Venues

# Invercargill Christian Centre

165 Leet Street

The entire centre is available for hire or the meeting rooms or auditorium. The venue has a kitchen available along with a playcafe and equipment for the little ones.

### CAPACITY



Auditorium  
400

### HIGHLIGHTS

- Inner City Location
- Built-in stage

### CONTACT DETAILS

- (03) 214 4562
- admin@christiancentre.org.nz
- www.christiancentre.org.nz



# Invercargill Central Baptist Church

11 Deveron Street

Fabulous location just a short walk from the Invercargill Civic Theatre and CBD.

### HIGHLIGHTS

- Inner city location

### CONTACT DETAILS

- (03) 218 4554
- office@icbc.org.nz
- www.icbc.org.nz



## Solo Competitor Event Venue

# Southland Womens Club

194 Esk Street

Perfect for performances with stage, piano and polished wooden floors

### HIGHLIGHTS

- Inner City Location
- Built-in stage

### CONTACT DETAILS

**Pauline Nally - Secretary**

☎ 03 218 3731

✉ [womensclub@xtra.co.nz](mailto:womensclub@xtra.co.nz)



# Other Rehearsal Venues

### CENTRAL INVERCARGILL

- XO Church
- Central Baptist Church
- Kelvin Hotel
- Middle School
- Ascension Church
- Federated Farmers

### WIDER INVERCARGILL

- Stadium Southland
- Badminton Hall
- Soft Ball Clubrooms
- Southland Boys High School Hall
- Southland Girls High School Hall
- Lindisfarne Methodist Church





## Street March

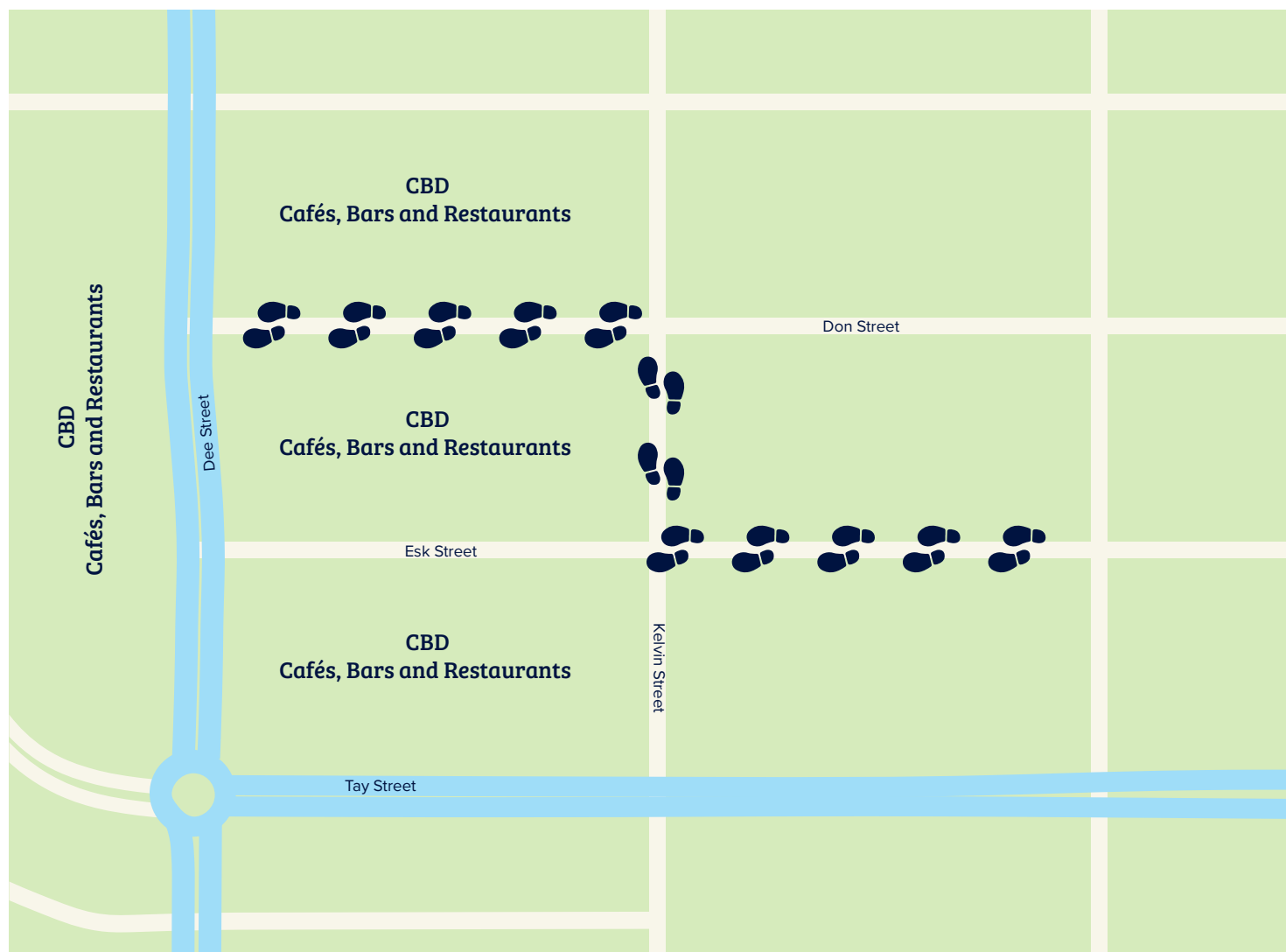
# Invercargill CBD

The Invercargill CBD has recently been upgraded with new eateries, retail and accommodation providers opening up. The street march could accommodate the right and left turns required for the march indicated by the suggested map below:

### KEY



Potential  
March Path



Further information about road closures and permits can be found at SouthlandNZ website:

[Regulations, Consents & Permits \(southlandnz.com\)](https://www.southlandnz.com/Regulations,Consents&Permits)

## Featured accommodation

# Ascot Park Hotel

Tay Street/Racecourse Road Corner

Ascot Park Hotel is unique as it offers everything from deluxe hotel suites to self-contained apartments and motel units all at one venue - and all 116 rooms are newly refurbished ensuring maximum comfort. While staying here, guests can enjoy the indoor heated swimming pool, spa, saunas, and fitness centre, as well as the award-winning in-house restaurant and bar, Emberz. There is also extensive on-site parking, with parks directly outside most units.

### ROOM TYPES

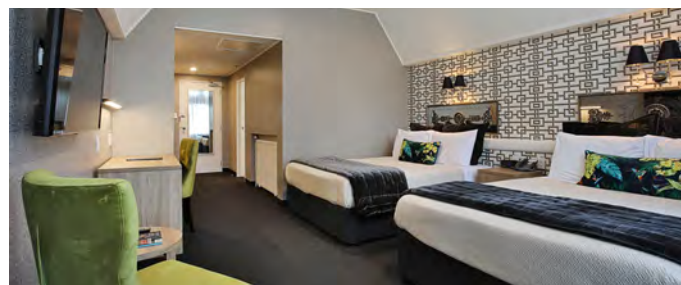
				
Twin Suites	King Suites	Executive Suites	One Room Apartments	Larger Apartments
72	30	1	12	1

### FEATURES

- 24-hour reception
- Room service and on-site restaurant and bar
- Complimentary shuttle to and from airport or city centre

### CONTACT DETAILS

📞 0800 272 687  
 ✉️ [reservations@ascotparkhotel.co.nz](mailto:reservations@ascotparkhotel.co.nz)  
 🌐 [www.ascotparkhotel.co.nz](http://www.ascotparkhotel.co.nz)





# The Langlands

Don Street/Dee Street Corner

A seven-storey, 4.5 star hotel, The Langlands brings contemporary style to the inner city. It has 78 rooms, including large corner suites with unparalleled views of the city. It has been designed to give a unique Southland vibe. In particular, the hotel rooms and public areas feature bespoke local artwork. Also on-site is a fitness centre and five quality eateries and bars, including a restaurant, cafe, house bar, lane-way bar, and top floor bar.

### ROOM TYPES

		
Twin Suites	King Suites	Executive Suites
58	14	6

### FEATURES

- Centrally located
- Many food and beverage options on-site
- Car park and valet service

### CONTACT DETAILS

📞 0800 84 86 88  
 ✉️ [book@thelanglands.co.nz](mailto:book@thelanglands.co.nz)  
 🌐 [www.thelanglands.co.nz](http://www.thelanglands.co.nz)





## Featured accommodation

# Kelvin Hotel

Kelvin Street/Esk Street Corner

Kelvin Hotel has 61 well-appointed rooms with all the modern conveniences, including a king deluxe suite, suites with separate living rooms, and a three-bedroom fully equipped apartment. There is an on-site restaurant and bar, as well as a more casual sports bar. Guests are offered complimentary free access to a nearby fitness centre. It's a quick walk from the hotel to a host of inner-city destinations, making it a very convenient location.

## ROOM TYPES



Twin  
Suites  
48



Queen  
Suites  
3



King  
Suites  
3



Executive  
Suites  
6



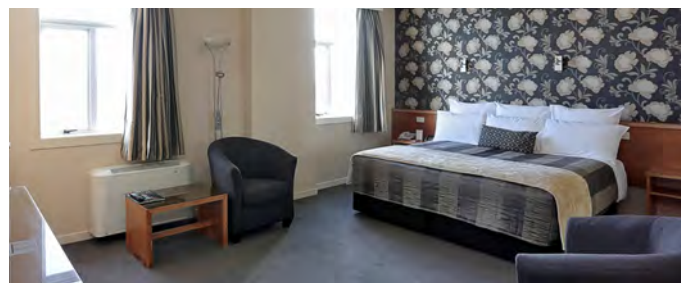
Larger  
Apartments  
1

## FEATURES

- Centrally located
- Room service and on-site restaurant and bar
- Valet car parking service

## CONTACT DETAILS

☎ 0800 802 829  
✉ [functions@kelvinhotel.co.nz](mailto:functions@kelvinhotel.co.nz)  
🌐 [www.kelvinhotel.co.nz](http://www.kelvinhotel.co.nz)



# Distinction Hotel Invercargill

Esk Street West/Leven Street Corner

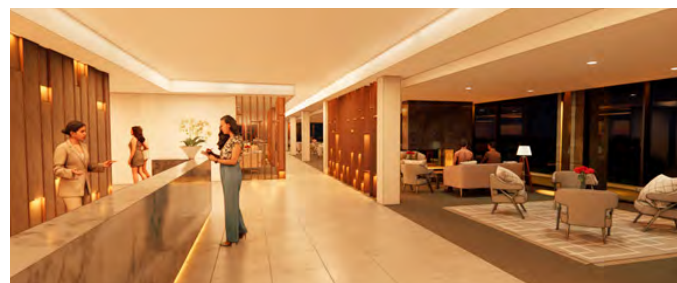
A brand new 4.5 star hotel is currently under construction in Invercargill! Scheduled to open in mid 2025, the hotel will offer 150 rooms in the city centre and will be part of the Distinction Hotels Group. The Group prides itself on offering quality, comfortable accommodation with the highest standard of service to visitors.

The hotel repurposes the unused Menzies Building, a former government building. To ensure a restful night's sleep, all suites will feature enhanced soundproofing, blackout curtains and luxury cloud-like beds, synonymous with those highly rated at Distinction Dunedin. Ensuite bathrooms will be outfitted with spacious walk-in showers, featuring both standard and rain shower heads, and will provide complimentary Distinction toiletries. Sustainability will be front of mind, with toiletries saved from going to landfill through The Hotel Weka recycling program.

It will also be home to a stylish restaurant and bar and will have an on-site car park.

## CONTACT DETAILS

✉ [duncan@distinctionhotels.co.nz](mailto:duncan@distinctionhotels.co.nz)  
🌐 [www.distinctionhotels.co.nz](http://www.distinctionhotels.co.nz)



## Featured accommodation

# Balmoral Lodge

265 Tay Street

Balmoral Lodge Motel is a modern, deluxe motel property, conveniently situated close to the city centre, ILT Stadium Southland, the Splash Palace Aquatic Centre, and other main attractions. The units are roomy and include cooking facilities.

### ROOM TYPES

			
Twin Suites	Executive Suites	One Room Apartments	Two Room Apartments
7	3	22	8

### FEATURES

- Roomy, multiple-bed units
- Units have cooking facilities
- Outdoor BBQ area for guests

### CONTACT DETAILS

☎ 0800 225 667  
✉ [info@balmoralmotel.co.nz](mailto:info@balmoralmotel.co.nz)  
🌐 [www.balmoralmotel.co.nz](http://www.balmoralmotel.co.nz)



# Bella Vista Invercargill

240 Tay Street

The Bella Vista in Invercargill is centrally located, close to many and varied restaurants, bars, cafes and a superb shopping mall. The motel includes a variety of studios and one bedroom units, ideal for business or leisure. This property has been independently assessed by Qualmark as Silver 4 Star quality accommodation.

### ROOM TYPES

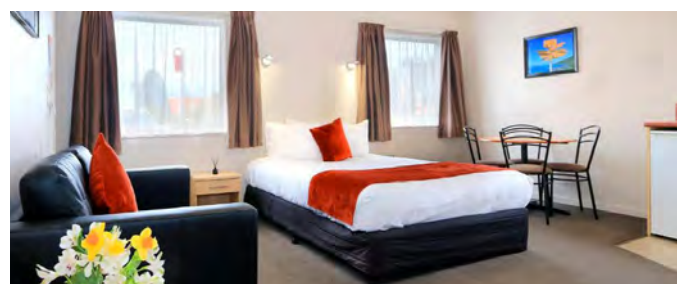
			
Twin Suites	Queen Suites	King Suites	One Room Apartments
2	9	5	2

### FEATURES

- Situated close to Invercargill's major attractions
- Free unlimited wifi
- Guest laundry

### CONTACT DETAILS

☎ 03 217 9799  
✉ [stay@bellavistainvercargill.co.nz](mailto:stay@bellavistainvercargill.co.nz)  
🌐 [www.bellavista.co.nz](http://www.bellavista.co.nz)





## Featured accommodation

# Ibis Styles Invercargill

15 Tay Street

Enjoy the convenience of staying at the heart of Invercargill, a perfect home away from home. Ibis Styles Invercargill offers comfortable accommodation options ideal for corporate and leisure travellers. Well-appointed and clean apartments complete with kitchenette in each room, complimentary wifi, off-site gym access, in-house movie theatre, games room, pool table, guest lounge and secure on-site car park. Restaurant charge backs available.

## ROOM TYPES



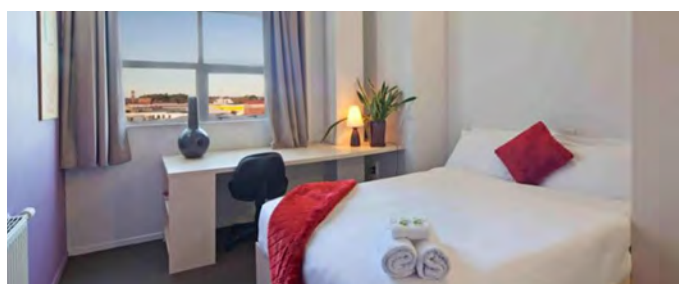
Queen  
Suites  
37

## FEATURES

- Communal lounge
- In-house movie theatre and games room
- Off-site gym access

## CONTACT DETAILS

☎ 03 211 3800  
✉ [bookings@ibisinvercargill.co.nz](mailto:bookings@ibisinvercargill.co.nz)  
🌐 [www.ibisinvercargill.co.nz](http://www.ibisinvercargill.co.nz)



# Quest Invercargill

10 Dee Street

Located in the beautifully restored Central Post Office building, Quest Invercargill offers 38 serviced apartments including studios, one and two bedroom apartments. The studios, with well-equipped kitchenettes, are the perfect alternative to a hotel room. The one and two bedroom apartments are ideal for families, colleagues or larger groups looking for a home away from home experience.

## ROOM TYPES



Twin  
Suites  
11



King  
Suites  
15



Executive  
Suites  
8



One Room  
Apartments  
8



Two Room  
Apartments  
4

## FEATURES

- Sky TV and free wifi
- Off-street parking
- Guest laundry

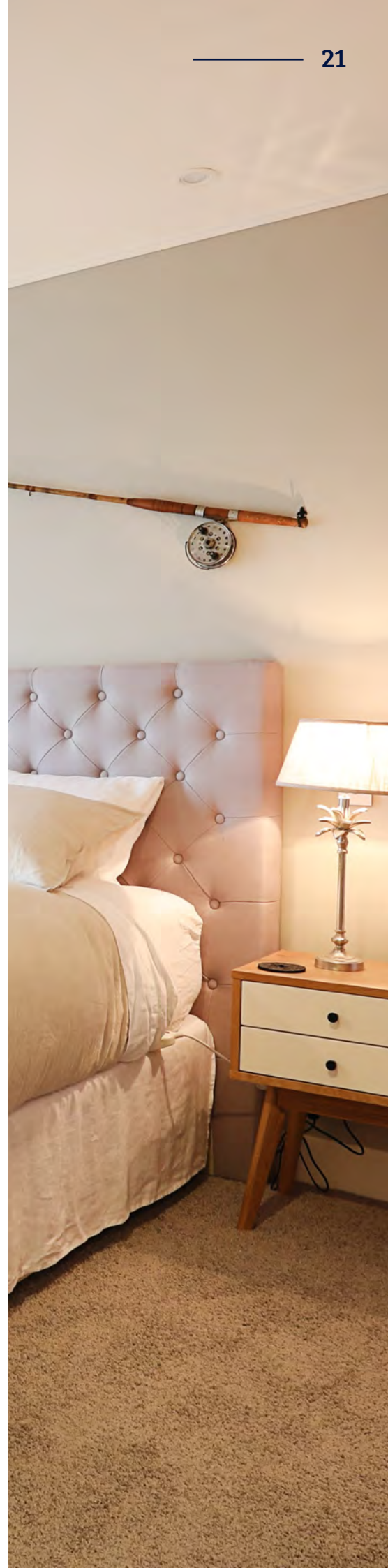
## CONTACT DETAILS

☎ 03 211 3966  
✉ [reservations@questinvercargill.co.nz](mailto:reservations@questinvercargill.co.nz)  
🌐 [www.questapartments.co.nz](http://www.questapartments.co.nz)



## Accommodation options in Invercargill

Admiral Court Motel	12 rooms	Motel
Ascot Park Hotel	116 rooms	Hotel/Motel
Asure Surrey Court	10 rooms	Motel/Apartments
Asure Townsman Motor Lodge	26 rooms	Motel
Balmoral Lodge	40 rooms	Motel
Bavarian Motel	11 rooms	Motel
Bella Vista Invercargill	18 rooms	Motel
Birchwood Manor Motel	30 rooms	Motel
Colonial Motel	13 rooms	Motel/Apartments
Colonial On Tay	10 rooms	Motel/Apartments
Comfort Inn Tayesta Motel	14 rooms	Motel
Distinction Invercargill (Coming Soon!)	150 rooms	Hotel
Golden Leaf Apartments	8 rooms	Apartments
Hacienda Motel	7 rooms	Motel
Heritage Court Motel	4 rooms	Motel/Apartments
Homestead Villa Motel	35 rooms	Motel/Apartments
Ibis Styles Invercargill	37 rooms	Hotel/Apartments
Kelvin Hotel	61 rooms	Hotel
Moana Court Motel	10 rooms	Motel
Monarch Motel	22 rooms	Motel
Queens Park Motels	14 rooms	Motel/Apartments
Quest Invercargill Apartments	46 rooms	Hotel/Apartments
Shelby Motor Lodge	38 rooms	Motel/Apartments
The Langlands	78 rooms	Hotel
The Lodges at Transport World	8 rooms	Cottages
Tower Lodge Motel	16 rooms	Motel
Tuatara Lodge	14 rooms	Lodge/ Backpackers
388 Tay Motel	10 rooms	Motel
45 On Avenal	7 rooms	Motel





# Morning or evening activities

**Need to stretch your legs or work off last night's scrumptious dinner? Here are some options to get you moving throughout Waihōpai Invercargill.**

## QUEENS PARK

Waihōpai Invercargill's pride and joy, this magnificent public park is located in the heart of the city. Sprawling across 80 hectares of beautifully kept pathways and gardens, there is also a fitness track, golf course and disc golf course. Come and see for yourself why this park is so spectacular.

## WAIHOPAI WALKWAY

Walk or cycle the banks of the Waihōpai River from the Stead Street Bridge to the Waihopai Dam. Join and exit the walkway at a number of places or follow the river for the entire 15km loop.

## INVERCARGILL ESTUARY WALKWAY

Take a stroll on the boardwalk around the Pleasure Bay lagoon with views over the estuary.

## OTEPUNI STREAM WALKWAY

Travel eastwards on this walkway through the Otepuni Gardens, which cover 9.4 hectares in the inner city.

## THOMSONS BUSH

Nestled within the city, Thomsons Bush offers a network of easy-going paths for walking and cycling through one of the few remnants of the native swamp forest characteristic to southern Murihiku Southland.

## ORETI BEACH

A true recreational asset, Oreti Beach is a short drive from the city centre. It's the perfect place to get some fresh air and watch the sun rise or set.

## SANDY POINT DOMAIN

Bounded by the Oreti River and Foveaux Strait, Sandy Point Domain is a recreational hub for various clubs and provides opportunities for walking, cycling, and more. It is a beautiful area, with an abundance of native birds, and is located just 10km from the centre of Waihōpai Invercargill.

## SPLASH PALACE

The Southland Aquatic Centre – Splash Palace – is a great public pool facility. The indoor aquatic centre includes a 50m 8 lane sports pool, a leisure pool with waves and sprays, and a children's pool. It also has multiple hydro slides, a spa pool, a sauna, and a cafe.

## GYMS IN CENTRAL INVERCARGILL

- YMCA Invercargill
- Snap Fitness
- Anytime Fitness
- F45 Training Invercargill



# Extend your stay

## Make your event the launchpad for exploring Murihiku Southland.

With a vast array of experiences available in the south, there's something to suit every group's interests. Why not stay a while and discover what the region has to offer.

## Highlights

### EXPERIENCE Paddock TO PLATE DINING

Surrounded by ocean and pasture, Murihiku Southland is the ultimate Surf'n'Turf destination - a produce paradise. Enjoy the freshest seafood, including world-famous Bluff oysters, Stewart Island salmon, crayfish, mussels, pāua, and succulent blue cod. Take your pick of exceptional tasting, grass-fed lamb, prime pasture-fed beef, and the finest venison, alongside the crispness and crunch of farm-fresh veges. And let's not forget that Southland delicacy – the famous cheese roll, the perfect companion for a fabulous, locally-roasted coffee.

### DISCOVER LOCAL CULTURE AND HERITAGE

Murihiku Southland has rich and varied natural and cultural heritage, with distinctive areas of the region embracing their unique stories. From tales of early Māori voyages to remote lighthouses and whalers' sites, moonshine distilleries, Victorian hotels, farming and mining history, and a 180-million-year-old petrified forest, Murihiku Southland is a treasure trove of astonishing experiences. The region's living history is wonderfully showcased through interactive modern museums, and unforgettable outdoor experiences.

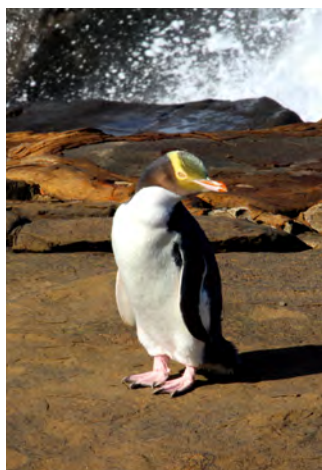
### ENCOUNTER UNIQUE WILDLIFE AMONGST UNTAMED WILDERNESS

Murihiku Southland boasts an incredible contrast of landscapes, from towering mountain ranges rising out of deep-water fiords, picturesque rivers flowing through rolling farmland, to sweeping beaches bordered by primeval-looking native forests. Unique experiences greet you at every turn as your guidebook pages come alive. Southland is a haven for rare species only found in New Zealand and offers some of the best bird-watching opportunities in the

world. On Rakiura Stewart Island, kiwi outnumber humans 50 to 1 and the southern sanctuary offers a unique kiwi spotting experience as the birds are practically on your doorstep. Discover the Catlins and observe hoiho yellow-eyed penguins as they come ashore on the 180-million-year-old petrified forest at Tumu Toka Curio Bay. In Murihiku Southland there are many options for tours and cruises that will let you experience the wildlife without having to find where they hide yourself. Sit back, photograph and relax, and enjoy a true southern experience.

### ENJOY UNFORGETTABLE STARGAZING

An International Dark Sky Sanctuary, Rakiura Stewart Island combines stunning scenery with an almost primeval landscape, for an incredible night sky experience. The Island's remote location, free from light pollution, makes for exceptional stargazing. Te Rua-o-te-Moko Fiordland is equally amazing for stargazing, you can admire the Milky Way from the Marakura Wharf in Te Anau, or the epic, starry night vistas above Mitre Peak in Piopiotahi Milford Sound. Fiordland National Park is set to become the first National Park in New Zealand to be awarded International Dark Sky Park status.





# Explore the region

## Take a break and discover more of Murihiku Southland during your event.

To make your meeting more memorable, why not showcase some of the the region's highlights to your delegates.

## Itineraries

### HALF DAY TRIP TO MOTUPŌHUE BLUFF

- › Drive to Bluff
- › Explore the Bluff Maritime Museum
- › Lunch at Oyster Cove
- › Short walk on the Foveaux Walkway
- › Take a photo with the famous Stirling Point signpost
- › Head up Bluff Hill for some epic views
- › Return to Invercargill

*For a full-day adventure, either go on a deep sea fishing trip or go shark cage diving with Shark Experience Bluff*

### DAY TRIP TO APARIMA RIVERTON

- › Breakfast in Invercargill at Brew'd
- › Drive west along the Southern Scenic Route to Riverton
- › Visit Te Hikoi Museum
- › Lunch at the Aparima
- › Explore Gemstone Beach
- › On the way back stop at the Environment Centre
- › Return to Invercargill

### DAY TRIP TO THE CATLINS

- › Breakfast in Invercargill at The Batch
- › Drive east along the Southern Scenic Route to Pūrākaunui Falls
- › Visit The Lost Gypsy
- › Stop to look at the view from Florence Hill Lookout
- › Head back along the route to McLean Falls
- › Lunch at Niagara Falls Cafe
- › Explore the petrified forest at Curio Bay and discover the Gateway Experience Tumu Toka Curioscape
- › On the way back make one last stop at Waipapa Point Lighthouse
- › Return to Invercargill



### OVERNIGHT TRIP TO RAKIURA STEWART ISLAND

- › Take the courtesy coach to Bluff and journey across to Stewart Island on the ferry
- › Discover the island with RealNZ's Village & Bays Tour
- › Lunch at the Kai Kart
- › Rent electric bikes and bike to the start of the Rakiura Track
- › Evening kiwi spotting tour
- › Stay at the South Seas Hotel
- › Explore Ulva Island, a predator-free open island sanctuary, on a half-day guided tour
- › Visit Rakiura Museum
- › Return to Invercargill by ferry



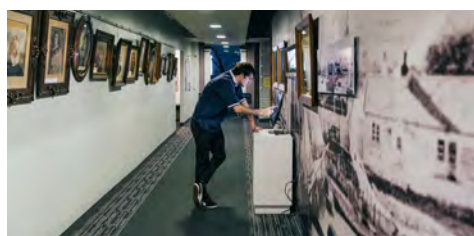
### OVERNIGHT TRIP TO THE GORE DISTRICT

- › Drive to Gore
- › Visit the Hokonui Pioneer Village
- › Lunch at The Thomas Green
- › Explore the Eastern Southland Art Gallery
- › Take a photo with the trout statue
- › Stay at Croydon Lodge
- › Breakfast at Oven Fresh Bakery
- › Short walk at Dolamore Park
- › Head over to Mandeville to discover the Croydon Aviation Centre
- › Lunch at Miss Cocoa Cafe
- › Return to Invercargill



### OVERNIGHT TRIP TO FIORDLAND

- › Drive west along the Southern Scenic Route all the way to Te Anau
- › Morning tea at Brunel Peaks Cafe
- › Jet boat ride with Fiordland Jet
- › Late lunch at Sandfly Cafe
- › Watch the Ata Whenua film at the Fiordland Cinema
- › Stay at Tasman Holiday Park Te Anau
- › Take a trip into Milford Sound along the Milford Road by coach
- › Cruise on the iconic Milford Sound
- › Journey on the coach back to Te Anau
- › Return to Invercargill





# Invercargill & Bluff

25

Waihōpai Invercargill is Southland's main commercial hub and New Zealand's southernmost city. Dubbed the "City of Water and Light" due to the city's position beside a river estuary and the long summer daylight hours, Invercargill has a laid-back atmosphere - except when it comes to celebrating Southland's obsession with classic motoring!

Motupōhue Bluff lies thirty kilometres south of Waihōpai Invercargill and is the southernmost settlement on mainland New Zealand. The most-photographed spot in Bluff is the famous signpost at Stirling Point.



## BILL RICHARDSON TRANSPORT WORLD

The largest private automotive museum of its type in the world. With more than 300 vehicle displays, a growing wearable arts collection and more - there's something to captivate everyone.

[transportworld.co.nz](http://transportworld.co.nz)



## QUEENS PARK

Explore this magnificent 80-hectare park in the heart of Invercargill - featuring wildlife habitats, gardens, a cafe, a golf course, disc golf and more!

[southlandnz.com](http://southlandnz.com)



## CLASSIC MOTORCYCLE MECCA

New Zealand's most diverse motorcycle display, home to more than 300 bikes and sidecars from over 60 manufacturers, ranging from 1902 - 2007.

[motorcyclemecca.nz](http://motorcyclemecca.nz)



## DIG THIS INVERCARGILL

New Zealand's first heavy equipment playground is an experience quite unlike any other. Get ready to rip, push and pull your way to a whole new level of excitement.

[digthisinvercargill.nz](http://digthisinvercargill.nz)



## STIRLING POINT

Located at the beginning (or end) of New Zealand's State Highway 1. Stirling Point is most famous for its signpost, which depicts directions and distances to major cities around the world.

[southlandnz.com](http://southlandnz.com)



## HE WAKA TUIA ART + MUSEUM

Southland's together space, the collaboration between the Invercargill Public Art Gallery and the Southland Museum and Art Gallery, is called He Waka Tuia Art + Museum.

[hewakatuia.nz](http://hewakatuia.nz)



## ORETI BEACH

Oreti Beach is a coastal playground just minutes from Invercargill that you're able to drive right onto! This beach is famous for being Burt Munro's testing ground.

[southlandnz.com](http://southlandnz.com)





Encompassing New Zealand's biggest national park, the remote Te Rua-o-te-Moko Fiordland is awe-inspiringly beautiful, with high-sided valleys, fiords, and lakes carved by ancient glaciers. The only fiord accessible by road, the breathtaking Piopiotahi Milford Sound has been attracting international visitors for more than 100 years. A boat cruise on a lake or sound is one of the best ways to take in this world-class sightseeing destination. For the more adventurous, tackling one of the three Great Walks - the Milford, Routeburn, or Kepler Track - is another fantastic way to discover this beautiful part of Murihiku Southland.



## ATA WHENUA FILM

This locally produced film takes you on an extraordinary aerial journey across one of the most awe-inspiring places on the planet - Fiordland Ata Whenua.

[fiordlandcinema.co.nz](http://fiordlandcinema.co.nz)



## TE ANAU GLOWWORM CAVES

Experience a mysterious underground network of limestone passages filled with whirlpools and an underground waterfall before drifting in darkness beneath the luminous shimmer of glowworms.

[realnz.com](http://realnz.com)



## FIORDLAND HISTORIC CRUISES

Explore the Fiordland National Park while tasting incredible local cuisine and sipping fine New Zealand wines - all while sailing across Lake Te Anau on board a 1930's sailing ship!

[fiordlandhistoriccruises.co.nz](http://fiordlandhistoriccruises.co.nz)



## FIORDLAND FROM THE SKY

The glacier-carved cliffs flowing with waterfalls, towering peaks and dense rainforest of Fiordland are best seen by air. From plane or helicopter, the choice is yours.

[fiordland.org.nz](http://fiordland.org.nz)



## FIORDLAND JET

Take in the breath-taking landscape of Te Wahipounamu, a UNESCO World Heritage Site, as you jet boat down the crystal-clear waters of the Waiau River to the awe-inspiring Lake Manapouri.

[fjet.nz](http://fjet.nz)



## PIOPIOTAHU MILFORD SOUND

Often described as the "eighth wonder of the world", the jewel in Fiordland's crown, and one of the New Zealand's top travel destinations. Extraordinary waterfalls and wildlife can be viewed from a cruise or kayak trip.

[fiordland.org.nz](http://fiordland.org.nz)



## PATEA DOUBTFUL SOUND

With towering peaks, rainforest, and twisting, hidden inlets, this fiord is ten times bigger than Milford Sound. Enjoy an overnight cruise to really immerse yourself in the serenity of the national park.

[fiordland.org.nz](http://fiordland.org.nz)



# Stewart Island

27

Rakiura Stewart Island is the southernmost and smallest island of the three main islands of New Zealand. The island's clear turquoise sea and white sand beaches make it look like a tropical paradise and it is a haven for many rare native birds, such as friendly kaka and weka, beautiful kakariki and South Island saddlebacks, and elusive brown kiwi. Roughly 85% of Rakiura Stewart Island forms the wild and enchanting Rakiura National Park. One of the best ways to experience the park is by tramping the Rakiura Track, one of New Zealand's Great Walks, which explores a range of epic scenery from rainforests and wetlands to vast sand dunes.



## TE PUKA O TE WAKA RAKIURA MUSEUM

Displays and information about early Māori settlements, mutton-birding, whaling, fishing, timber milling, mining, boat building, transport, early schools and churches are all featured, delving into Stewart Island's past.

[rakiuramuseum.co.nz](http://rakiuramuseum.co.nz)



## RAKIURA DARK SKY SANCTUARY

The remote location of Stewart Island means it is virtually free of light pollution, making the views of the night sky exceptional. Join Twinkle Dark Sky Tours to see some of the most beautiful sights in the universe!

[southlandnz.com](http://southlandnz.com)



## GUIDED TOURS OF STEWART ISLAND

The best way to explore the island, guided tours of Oban and surrounds or Ulva Island provide insight into the history of New Zealand's southernmost community and the environment and wildlife of Stewart Island.

[southlandnz.com](http://southlandnz.com)



## WILD KIWI EXPERIENCE

Stewart Island is one of the few places where you can see a wild kiwi so close to civilisation. Travel through the native forest by torchlight to see the southern brown kiwi - often seen searching for food.

[realnz.com](http://realnz.com)



## TE WHARAWHARA ULVA ISLAND

An absolute must-do, Ulva Island is a predator-free sanctuary. Touring the island via the easy walking tracks gives an unspoiled glimpse into the lives of some of New Zealand's most endangered birds.

[southlandnz.com](http://southlandnz.com)



## BUNKHOUSE THEATRE

Home of 'A Local's Tail', a delightfully quirky film that introduces local characters, reveals the struggles and triumphs of this pioneering community, and gives you a tour of the island - all guided by local dog Lola.

[bunkhousetheatre.co.nz](http://bunkhousetheatre.co.nz)



## STEWART ISLAND E-BIKES

Explore picturesque Stewart Island in style on eco-friendly electric bikes. Stop at your leisure and have the time to reach more remote destinations.

[stewartisland-electricbike-hire.co.nz](http://stewartisland-electricbike-hire.co.nz)



# The Catlins

A spectacular coastal stretch between Waihōpai Invercargill and Balclutha in the Clutha District, the Catlins possesses a rugged beauty and untouched quality that is magnetic; with vast native forests fringed by high cliffs, deserted sandy beaches, and sparkling bays. This area is possibly the most stunning part of the Southern Scenic Route which is rated as one of the world's top 10 drives. Like the pot of gold at the end of a rainbow, tucked away at the end of various walks in the Catlins are several magnificent waterfalls, including the photograph-worthy McLean Falls and the popular triple-tiered Pūrākaunui Falls.



## TUMU TOKA CURIO BAY

This unique bay is of international significance for its fossilised forest which dates back to the Jurassic period 160 million years ago - the forest was alive when New Zealand was part of Gondwanaland!

[southlandnz.com](http://southlandnz.com)



## TUMU TOKA CURIOSCAPE

This world class interpretive centre about Curio Bay is especially designed to share the stories and history of this place on the edge of the world. Tailor your own experience with interactive touch screens and more!

[curioscape.co.nz](http://curioscape.co.nz)



## MCLEAN FALLS

Watch the water pour over the highest waterfall in the Catlins as it sparkles with the light shining through the rainforest.

[southlandnz.com](http://southlandnz.com)



## WAIKAPA POINT LIGHTHOUSE

This often-photographed historic lighthouse sits proudly on a rugged point that is one of the best spots to see sea lions resting on land.

[southlandnz.com](http://southlandnz.com)



## CATHEDRAL CAVES

Feel dwarfed by the sheer size of these magnificent caves! The cavernous caves are only accessible around low tide after a short walk through native bush and along a beach.

[cathedralcaves.co.nz](http://cathedralcaves.co.nz)



## THE LOST GYPSY

Explore all the quirky automata, wind-up and water-driven gadgets and gizmos cleverly made from found objects - shells, toys, coins, wood, watches, wire.

[thelostgypsy.com](http://thelostgypsy.com)



## SLOPE POINT

The southernmost point on the South Island of New Zealand, accessible via a short walk. The views of the surrounding ocean from the point's steep rugged cliffs are spectacular!

[southlandnz.com](http://southlandnz.com)



Māruawai Gore is Southland's second largest town and lies on the banks of the Mataura River. With nearly 150km of easily accessible waters that are internationally renowned for brown trout fly-fishing, it's no wonder Māruawai Gore is now known as the "Brown Trout Capital of the World"! Alongside fantastic fishing, the rural town is also famous for its country music and illicit whisky making, and is a growing hub for the arts.

For those who want to get more off the beaten track, Murihiku Southland has a wide range of activities to try and history to explore - all set amongst some of the most stunning landscapes.



## EASTERN SOUTHLAND GALLERY

Home of the internationally renowned John Money Collection and Ralph Hotere Gallery, this gallery also features a diverse program of temporary exhibitions.  
[esgallery.co.nz](http://esgallery.co.nz)



## HOKONUI MOONSHINE MUSEUM

The Gore District's colourful history of whisky making and consumption is celebrated in this unique museum, located in Gore's heritage precinct.  
[southlandnz.com](http://southlandnz.com)



## GORE STREET'S ART TRAIL

Eight bold and beautiful murals have been painted across town by various street artists including ex-Gore artist Sean Duffell. The colorful designs are part of the Streets Alive programme that form an art walking trail.  
[southlandnz.com](http://southlandnz.com)



## FLY FISHING

The Mataura River is a trout fishing paradise, it has the highest population and catch rate of any river in New Zealand. There are many skilled and experienced guides in the region who offer customised fishing trips.  
[southlandnz.com](http://southlandnz.com)



## CROYDON AVIATION HERITAGE CENTRE

Here the golden age of flight can be relived! This museum is dedicated to preserving and celebrating New Zealand's civil aviation heritage, both the stories of pioneer aviators and their equally colourful machines.  
[croydonaviation.co.nz](http://croydonaviation.co.nz)



## SWITZERS MUSEUM

This museum's displays include material relative to high country farming and the area's gold mining past and associated Chinese settlement - Waikaia owes much of its history to gold which was discovered there in 1862.  
[southlandnz.com](http://southlandnz.com)



## AROUND THE MOUNTAINS CYCLE TRAIL

This 186km trail winds from the shores of Lake Wakatipu and alpine vista views, through rolling farmland and historic townships (such as Lumsden), to high country stations and the beautiful Mavora Lakes Conservation Park.  
[aroundthemountains.co.nz](http://aroundthemountains.co.nz)



# Tour the neighbouring regions

**The Murihiku Southland region is bordered by some of New Zealand's most popular destinations, offering many options for pre and post touring.**

The natural wonderland of Clutha, the characterful city of Dunedin, the tourist hot-spot of Queenstown, and the magnificent area of Central Otago are all only a short drive from Waihōpai Invercargill, giving many exciting options for touring before or after an event.

Clutha boasts the often photographed Purakaunui Falls and Nugget Point Lighthouse. Dunedin shelters only mainland breeding colony of Northern Royal Albatross in the world. Queenstown is the adventure capital of New Zealand, with bungee jumping, jet boating, skiing and more. While Central Otago offers the country's best cycling on the The Otago Central Rail Trail – New Zealand's original great ride. Tick off some of your bucket list experiences while you are down in the south!

## Clutha

Take a journey off the beaten track to this area which celebrates nature and history. The northern Catlins has an array of spectacular waterfalls and wonderful wildlife. Further inland, Lawrence is home to the rich heritage of one of the world's largest gold rushes.

**Visit [cluthanz.com](http://cluthanz.com)**

## Queenstown

Located on the shores of Lake Wakatipu and nestled underneath the picturesque Remarkables mountain range, this is a sophisticated four-season holiday resort. The home of the world-famous bungee jump and Shotover Jet, there are plenty of amazing attractions.

**Visit [queenstownnz.co.nz](http://queenstownnz.co.nz)**

## Dunedin

Stretching around a pretty harbour, sheltered by the Otago Peninsula, Dunedin is home to many rare coastal animals. A city rich in heritage – there are many notable historic buildings, museums, and art galleries.

**Visit [dunedinnz.com](http://dunedinnz.com)**

## Central Otago

Giant vistas edged by weathered mountains and blue lakes make up Central Otago. The area has a unique climate, being both the hottest and coldest place in New Zealand. There are many must-do outdoor experiences.

**Visit [centralotagonz.com](http://centralotagonz.com)**





# **Business Events Southland**

**027 777 8997 • [karen@greatsouth.nz](mailto:karen@greatsouth.nz) • [southlandnz.com](http://southlandnz.com)**